

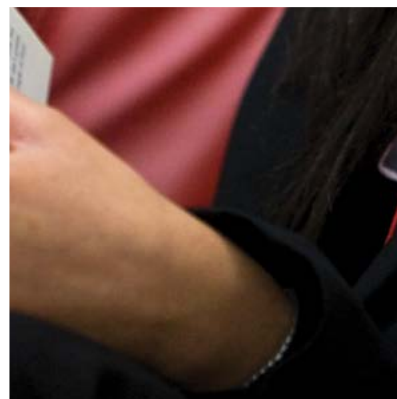
ENGLISH LITERATURE

A LEVEL COURSE DESCRIPTION

This course aims to encourage you to develop your interest in and enjoyment of literature and literary studies as you:

- read widely and independently both set texts and others that you have selected for yourself
- engage critically and creatively with a substantial body of texts and ways of responding to them
- develop and effectively apply your knowledge of literary analysis and evaluation
- explore the contexts of the texts you are reading and others' interpretations of them.

English Literature's historicist approach to the study of literature rests upon reading texts within a shared context. Working from the belief that no text exists in isolation but is the product of the time in which it was produced, English Literature encourages you to explore the relationships that exist between texts and the contexts within which they are written, received and understood. Studying texts within a shared context enables you to investigate and connect them, drawing out patterns of similarity and difference using a variety of reading strategies and perspectives.



Progression

An advanced GCE in English Literature is welcomed as a qualification for many careers and provides a very wide range of opportunities for courses in the Arts, Humanities, Media and Communications at degree level. AS English Literature can also be a valuable contrast to scientific, technological and economics based subjects opening up greater breadth of interest, range of reference and facility with ideas and language.

Why is the study of English so useful and how will it help in my career? Buzz-phrase "Transferable Life Skills" – interpersonal, communication, analytical, presentation, co-operation, lateral thinking skills- all helpful in any of these professions: Teaching, Advertising, Banking, Broadcasting, Civil service, Journalism, Law, Management,



ENTRY REQUIREMENTS

The course is aimed at those students who want to develop their experience of studying literature beyond that required for GCSE and who have already achieved GCSE English Language and Literature at grade 6 or its equivalent. The specification followed is that of AQA A English Literature. The course will consist of a wide range of literature.

LOVE THROUGH THE AGES

In Love through the ages, the theme of love, one of the most central themes in Literature is explored across time.

Whilst the course invites a variety of written response types, these will all encourage critical debate. In each exam task, you will be required to *argue* and to show *personal responses* and critical preferences, supported by the terminology relevant to the topics and contexts with which you are engaging. In doing so, you will be able to show 'creativity'.

MODERN TIMES - LITERATURE FROM 1945 TO THE PRESENT DAY

The second year of the course looks at texts within a shared context: Modern Times - Literature from 1945 to the Present Day. Here the lens through which you will explore texts is that of how the context of the post 1945 world connects them.

ASSESSMENT

What will I study for AS?

Paper 1: Love Through The Ages

What's assessed:

Study of two texts:
One Shakespeare play (Othello)
One AQA Anthology of love poetry through the ages (pre-1900)

Assessed: written exam: 1 hour 30 minutes | closed book | 50 marks | 50% of AS level

Questions

Section A: Shakespeare. One passage-based question with linked essay (25 marks)

Section B: Poetry. One question on printed poem (25 marks)

Paper 2: Love Through The Ages

What's assessed:

Study of two prose texts:
The Great Gatsby F. Scott Fitzgerald
The Awakening Kate Chopin
Exam will include an unseen prose extract

Assessed

- written exam: 1 hour 30 minutes
- open book
- 50 marks
- 50% of AS level

Questions:

Section A: Unseen prose. One compulsory question on unseen prose extract (25 marks)

Section B: Comparing prose texts. One comparative question on two prose texts (25 marks)

DEPARTMENT ENRICHMENT

We aim to offer a varied and interesting experience for students through extracurricular activities. We offer at least one theatre trip each year – encouraging students to see set drama texts on stage or simply to encourage the enjoyment of live theatre. Theatre trips include seeing the all black cast of “Cat on a Hot Tin Roof”, “The Glass Menagerie”, “The Beauty Queen of Leenane” “Who’s Afraid of Virginia Woolf” and “Othello”,

“Death of a Salesman” and “The Woman in Black.”

We have a very popular Debating Society. Students involved in debating have had the pleasure of attending events at the House of Commons, at the Foreign Office and more. Further, debating opens up lots of other doors and students in the past have found sponsorship and Internships at top city law firms and companies such as BP.

We also work with the National Theatre Scheme for young playwrights - New Views.

STUDENT SUPPORT

We want students to succeed in our subject and to that end we offer every means of support.

We provide after school study support during crucial periods such as before exams. When doing Year 13 coursework, teachers are committed to guaranteeing the best mark possible and so give personalised guidance in and out of lessons during the drafting process. Also our Google classroom is a source of additional reading material as well as being the place where lesson PowerPoints can be accessed should a student miss a lesson for any reason.

Provided students do all they can to attend lessons and complete work, we aim to work in partnership and do all we can to get the best out of every learner.

